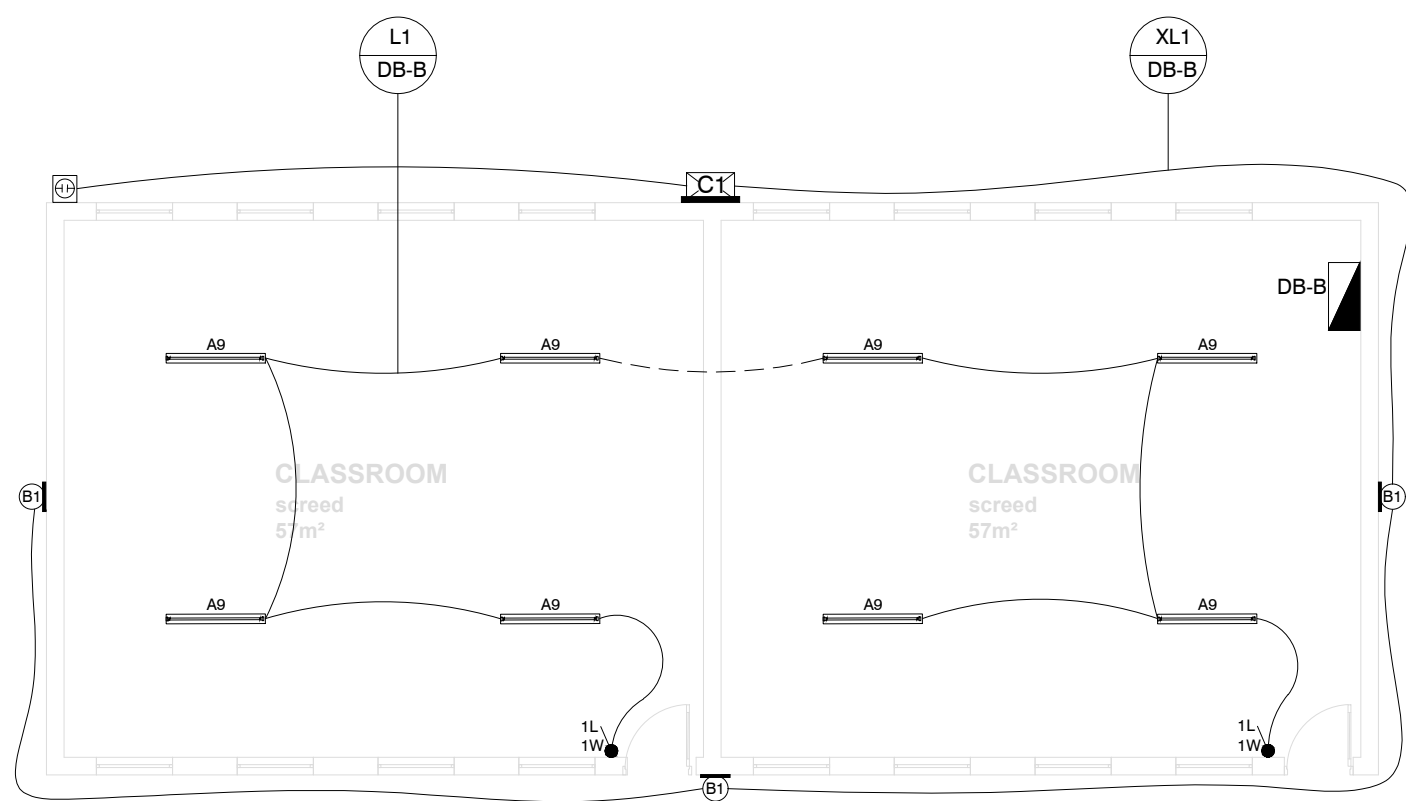


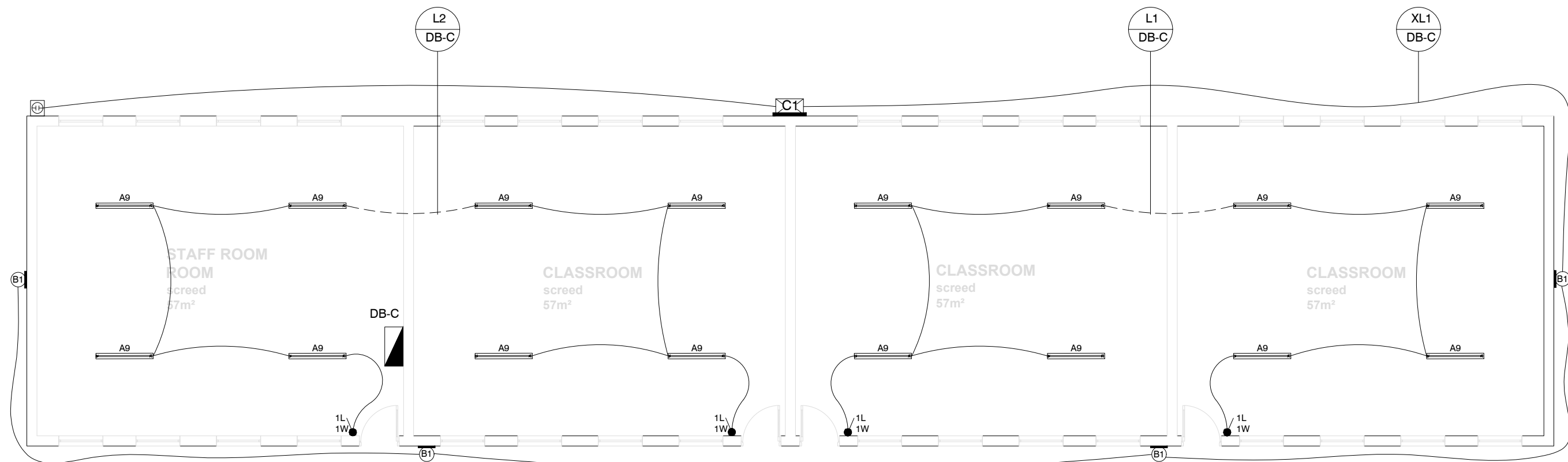
EXISTING CLASSROOMS - CL6

SCALE 1 : 100



EXISTING CLASSROOMS - CL2

SCALE 1 : 100



EXISTING CLASSROOMS - CL4

SCALE 1 : 100



SITE DEVELOPMENT PLAN

SCALE 1 : 100

LEGEND	
	DISTRIBUTION BOARD MOUNTED 2200mm A.F.F.L. TO TOP OF DB
	TYPE 9 SURFACE MOUNTED IP65 DIE-CAST ALUMINIUM BODY LUMINAIRE (1200mm) COMPLETE WITH LED 20W LAMP (± 2800LUMEN PER LAMP) 4000K, MINIMUM OF 25 000 OPERATING HOURS.
	TYPE B1 SURFACE MOUNTED BULKHEAD COMPLETED WITH ELECTRONIC GEAR AND LED 20W (± 2000LUMEN) 4000K, MINIMUM OF 50 000 OPERATING HOURS.
	TYPE C1 WALL MOUNTED FLOODLIGHTS 80W (± 10000LUMEN) 4000K, MINIMUM OF 100 000 OPERATING HOURS.
	1 LEVER 1 WAY LIGHT SWITCH MOUNTED 1400mm A.F.F.L.
	2 LEVER 1 WAY LIGHT SWITCH MOUNTED 1400mm A.F.F.L.
	IP66 WEATHER PROOF 1 LEVER 1 WAY LIGHT SWITCH MOUNTED 1400mm A.F.F.L.
	PHOTOCELL

NOTES:

1. CHANGE ALL FLORECENT LIGHT TUBES TO LED IN ALL NEW EXISTING BLOCKS.

NOTES:

REFERENCE DRAWING

NO.	DRAWING NUMBER	DESCRIPTION
1	3002	SITE PLAN LIGHTING LAYOUT
2	3005	DB-A AND DB-B SINGLE LINE DIAGRAM
3	3006	DB-C AND DB-D SINGLE LINE DIAGRAM
4	3007	DB-E AND DB-F SINGLE LINE DIAGRAM
5	3008	DB-G AND DB-M SINGLE LINE DIAGRAM
6	3009	RETICULATION LAYOUT

REVISION

NO.	DATE	REVISION	REV. BY
1	30/11/2022	ISSUED FOR TENDER	L MKHIZE

LODEMAN HOLDINGS SIGNATURES

DESIGNED	NAME	SIGNATURE	DATE
DRAWN BY	L. MKHIZE		
ENGINEER	L. MKHIZE		
PROJECT MANAGER	L. MKHIZE		

CLIENT DEPARTMENT SIGNATURES

FACILITY STAMP

FACILITY MANAGER

INFRASTRUCTURE MANAGER

GENERAL MANAGER

Checked by Professional Consultant

Name

Signature

Date

SIGPRO
ENGINEERING AND PROJECT MANAGEMENT



NORTHERN REGION

Project:

KZN DOE INFRASTRUCTURE DEVELOPMENT AND MAINTENANCE PROGRAMME

Drawing Description:

**MATAMZANE DUBE SECONDARY SCHOOL
EXISTING CLASSROOM CL6, CL2 AND CL4
LIGHTING LAYOUT PLAN**

Drawn: SIGPRO

Date: 30/11/2022

Scale/s:

AS SHOWN (A1)

Consultant Drawing Number:

1013-023-3000

DBSA Drawing number

500124283

Stamped by Plans Approval Committee